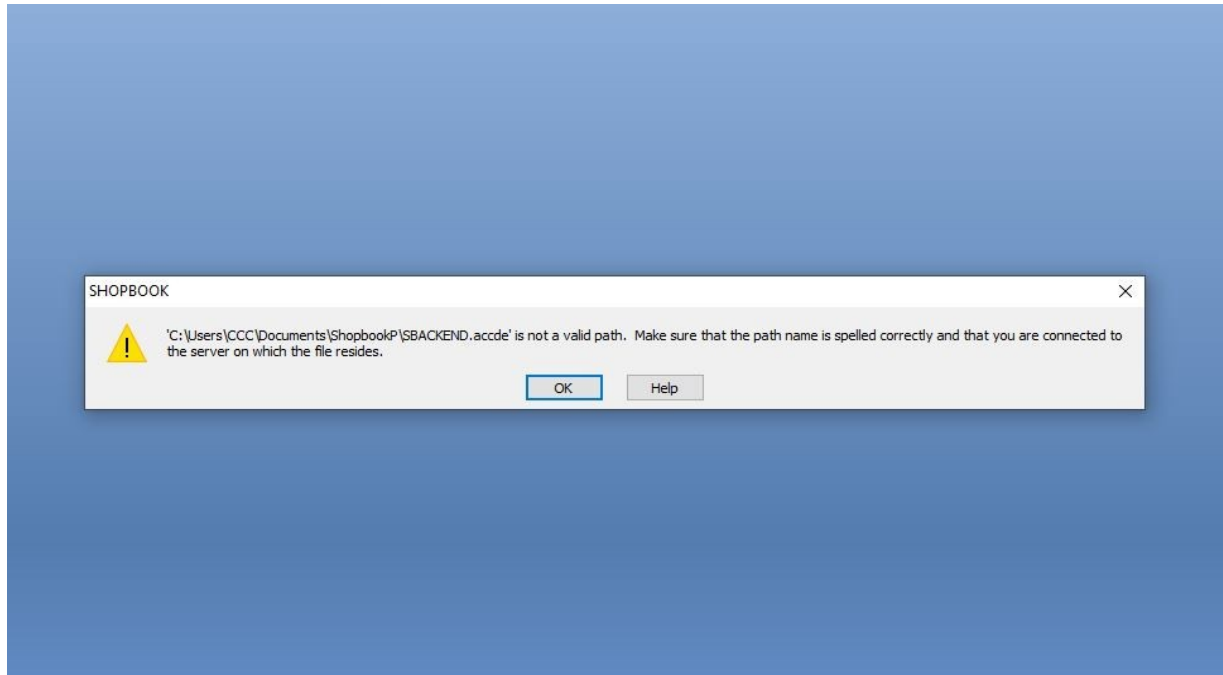
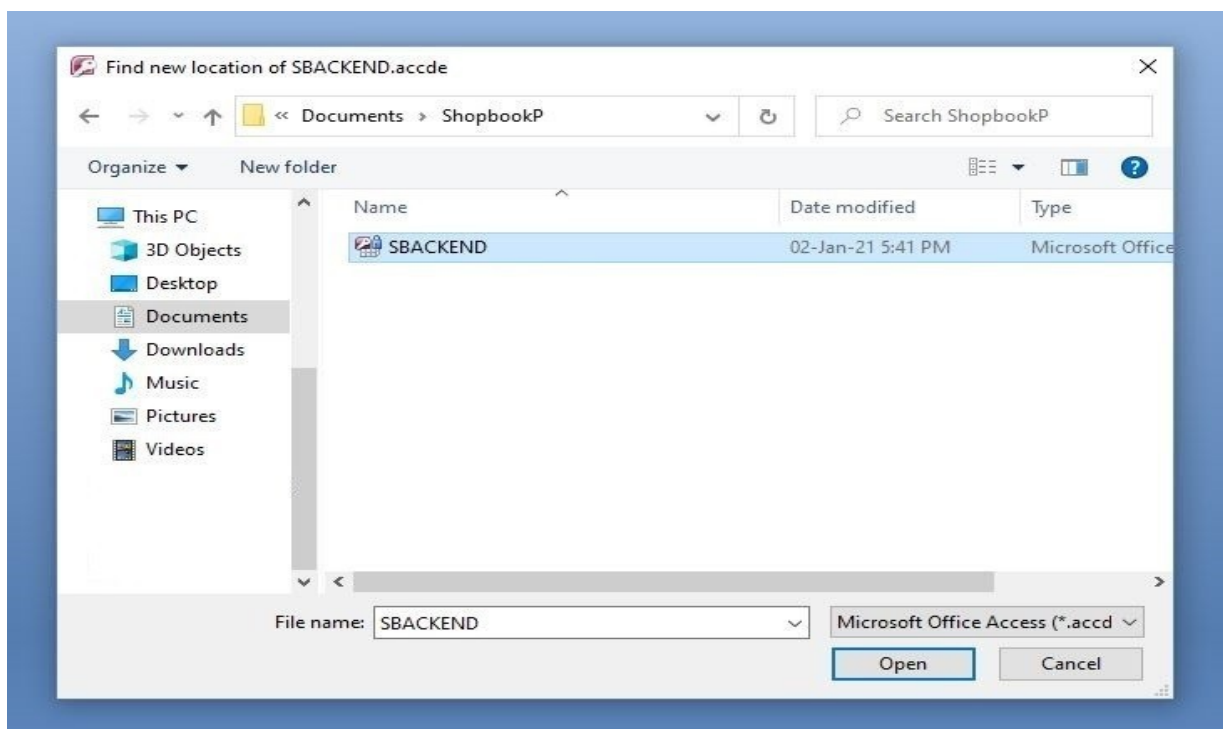


# HOW TO UPDATE SHOPBOOK

Replace old version of Shopbook in 'My Documents' or 'Documents' folder in C Drive of your computer with the downloaded latest version of Shopbook, after replacing the old version click on the Shopbook icon on the Desktop, The software opens with the below message.



Click 'OK' and browse to 'My Documents' or 'Documents' folder in C Drive of your computer and open the Shopbook folder and select the 'Sbackend' file and click 'Open'



The Shopbook Backend is now linked to Shopbook, just close the program and reopen. You will be prompted for User Name and Password. Select User Name as **Admin** and enter Password **12345** to Login.